

台灣民宿評鑑報告

TAIWAN HOME STAY ACCOMMODATIONS ASSESSMENT REPORT

民宿名稱 : 石園民宿
 Name : Shu-Yuan Homestay
 民宿地址 : 嘉義縣竹崎鄉中和村石棹 15-1 號
 Address : No15-1 Shi Zhao, Jhonghe Village, Jhuci Township, Chiayi County 604, Taiwan (R.O.C.)
 評鑑日期 : 中華民國 104 年 1 月 14 日
 Assessment date : Jan. 14, 2015
 評鑑房間數 : 5 - 相片如附件
 No. of room assessed : 5 - As attached photos

評鑑基準:

Assessment criteria

此評鑑共計 8 大構面 70 個檢核項目，必須全數通過，始確認民宿具有安全保障、衛生乾淨及民宿精神。

This 3S assessment includes 70 check points categorized into 8 major dimensions. All assessed items with satisfactory results ensure the assessed unit does meet the 3S criteria: Safety & security、Sanitation & cleanness and Spirits of Host.

評鑑項目(Assessment items)

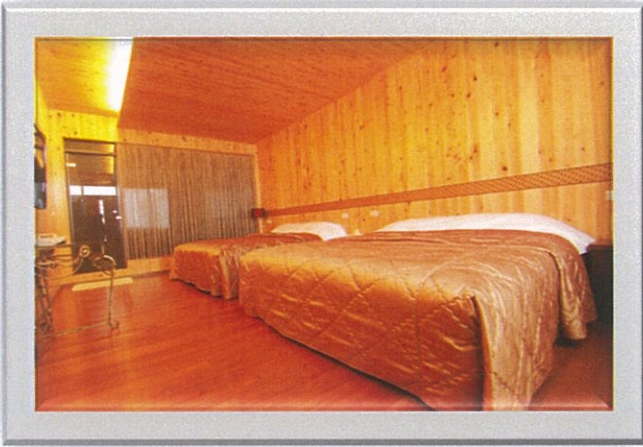
評鑑結果(Assessment results)

| | |
|--------------------------------------|------------------|
| ■ 安全保障 (Safety & Security) | 滿意(Satisfactory) |
| ■ 整體外觀 (Integrated Appearance) | 滿意(Satisfactory) |
| ■ 資訊服務 (Information & Communication) | 滿意(Satisfactory) |
| ■ 客房 (Guest Room) | 滿意(Satisfactory) |
| ■ 衛浴 (Sanitary facilities) | 滿意(Satisfactory) |
| ■ 民宿精神 (Spirits of Host) | 滿意(Satisfactory) |
| ■ 餐飲 (Food & Drink) | 滿意(Satisfactory) |
| ■ 環境衛生 (Environment & Sanitation) | 滿意(Satisfactory) |

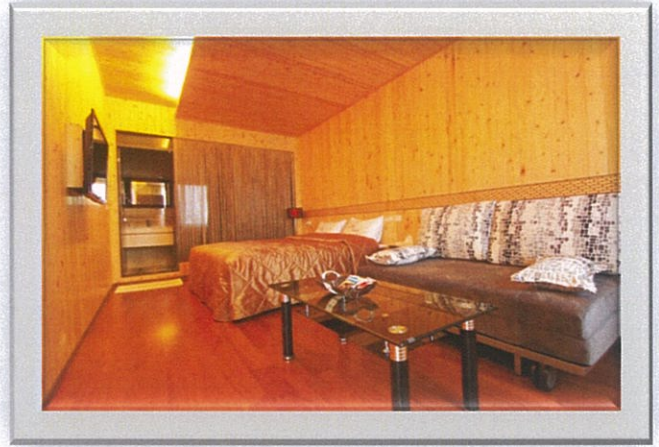
此報告之有效使用期限為 104 年 2 月 至 107 年 2 月，共計三年。
This report is valid from February, 2015 to February, 2018.

台灣檢驗科技股份有限公司
SGS Taiwan Ltd.

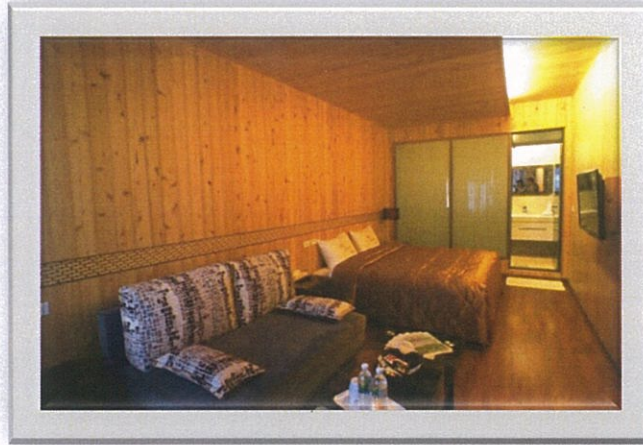




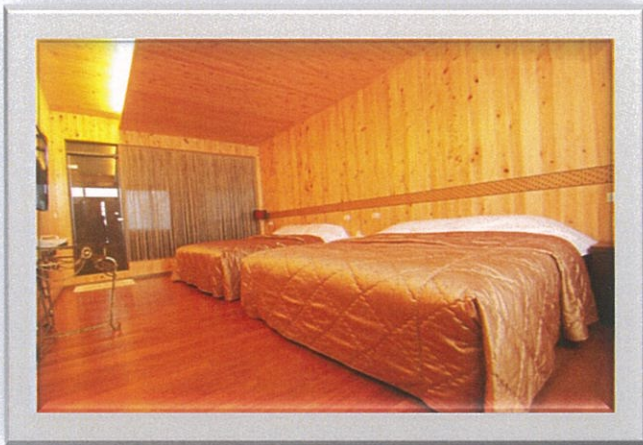
(雲海景觀喜悅四人房)



(雲海景觀玫瑰雙人房)



(雲海景觀百合雙人房)



(雲海景觀歡喜四人房)



(雲海景觀悅心雙人房)

